

Free Virtual Deaf/Hard of Hearing (DHH)



CENTER FOR PEER EXCELLENCE

WE ARE HERE TO SUPPORT YOU

Support Groups

The Bridgehaven Center for Peer Excellence is proud to offer free one hour groups focusing on these topics:

Connecting and Healing: Peer Support & Getting Help with Tessa & Maria
Tuesday, January 30th from 1-2 PM ET

Recovery & Wellness with Maria & Dominique
Thursday, February 1st from 1-2 PM ET

Identity, Stigma, Community, & Family with Jade & Maria
Monday, February 5th from 11 AM - Noon ET

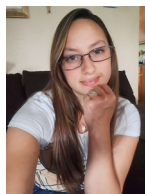
Boundaries & Positive Relationships with Dominique & Tessa
Tuesday, February 13th from 3-4 PM ET

Loss, Grief & New Beginnings with Maria & Tessa
Thursday, February 15 from 1-2 PM ET

Some of Our Group Leaders:



Jade Bell, APSS



Maria Castle, APSS



Tessa Fain, APSS



Dominique Harding, APSS

There is no need to pre-register or sign up, simply Snap this QR code or click the circle below at the time of the group you wish to attend!



ASL Interpreters will be available.

Questions? Email Brad Leedy at Bleedy@bridgehaven.org or call 502 585 9444